

# Slim Line Back Bar Refrigeration

## FBB-24 Series **New!**

(800) 777-9129



- |             |             |             |
|-------------|-------------|-------------|
| FBB-24-48   | FBB-24-60   | FBB-24-72   |
| FBB-24-48G  | FBB-24-60G  | FBB-24-72G  |
| FBB-24-48S  | FBB-24-60S  | FBB-24-72S  |
| FBB-24-48GS | FBB-24-60GS | FBB-24-72GS |

Item # \_\_\_\_\_

### Standard Features

- Our new slim line back bar units have been designed to be fully front breathing, able to handle those tight bar applications and extreme **100°F environments**.
- Refrigeration system is a free flowing air system throughout the box to ensure "ICE COLD" products at all times with a side mount evaporator system.
- Heavy duty 18 gauge stainless steel top, durable stainless steel inside walls and covered corner floor. Reinforced bottom door frame to protect your long term investment.
- Greater usable capacity with the ability for 3 tall boys high and ability to take the beer the full depth of the box.
- **Field interchangeable doors** from Solid to Glass or Glass to Solid to adapt to ever changing needs.
- Units come with compressor mounted on the left side with service friendly slide out rail system.
- LED light underneath the mullion to protect itself from normal operations.



FBB-24-48G



FBB-24-72S

### Options & Accessories

- Additional adjustable rails
- 3" Castors
- 6" Adjustable stainless steel legs
- 220 volts / 50 cycles / 1 phase



\*Conforms to UL & NSF-7 standards

Slim Line Back	Model	Doors	Capacity		Kegs	Shlvs	Amp	HP	Volt	NEMA Plug	Cabinet Dimensions			Shipping	
			12 Oz can	12 Oz Bottles							L	W	H	(Wt. Cubes)	
	FBB-24-48(S)	2	300	180	2	4	5.5	1/3	115	5-15P	49-5/8"	24-5/8"	35-1/2"	235	7.4
	FBB-24-60(S)	2	390	234	3	4	5.5	1/3	115	5-15P	62-1/4"	24-5/8"	35-1/2"	290	8.4
	FBB-24-72(S)	3	540	324	3	6	5.5	1/3	115	5-15P	72"	24-5/8"	35-1/2"	340	9.2
	FBB-24-48G(S)	2	300	180	2	4	5.5	1/3	115	5-15P	49-5/8"	24-5/8"	35-1/2"	250	7.4
	FBB-24-60G(S)	2	390	234	3	4	5.5	1/3	115	5-15P	62-1/4"	24-5/8"	35-1/2"	310	8.4
	FBB-24-72G(S)	3	540	324	3	6	5.5	1/3	115	5-15P	72"	24-5/8"	35-1/2"	365	9.2

(S) Stainless steel units / (G) Glass door units.

# Slim Line Back Bar Refrigeration

## FBB-24 Series

(800) 777-9129

**FAGOR**



### Specifications

#### Construction

Heavy duty stainless steel top, 18 gauge. Black vinyl front, sides and back. (S) Models have stainless steel front and sides. Galvanized back panel. Interior constructed of heavy duty stainless steel walls with coved corner NSF approved stainless steel floor. Door is comprised of heavy duty black vinyl steel. (S) Models are stainless steel. (G) Models are a dual pane glass with black frame, (SG) Models are a dual pane glass with aluminum frame. Provided with lock per door, magnetic door gaskets, removable without tools. Door openings have a plastic breaker strips to retard condensate formation.

Unit comes complete with a 2" Ecomate CFC-Free polyurethane insulation, foamed in place.

#### Refrigeration System

Self-contained capillary tube system using environmentally friendly (CFC Free) R-134a refrigerant. Front breathing compressor on left side for built-in applications. Evaporator coil is mounted to interior left side above the compressor. Large fan motor and fan blades for greater air flow.

Automatic condensate evaporator, no drain connection required. Evaporator condensate has been plumbed to a condensate pan located in the compressor housing. Access for the condensing unit behind the front grill, slides out for easy cleaning and maintenance.

Cabinets are designed to maintain temperatures between 33° F to 38° F in the interior cabinet.

#### Lights

Interior LED light underneath the mullion.

#### Shelving

Two adjustable epoxy coated shelves provided per door standard. One door with standard flat shelves, balance will come with adjustable bottle rails.

#### Others

Unit is supplied standard with an 8' cord and plug (Nema 5-15p).

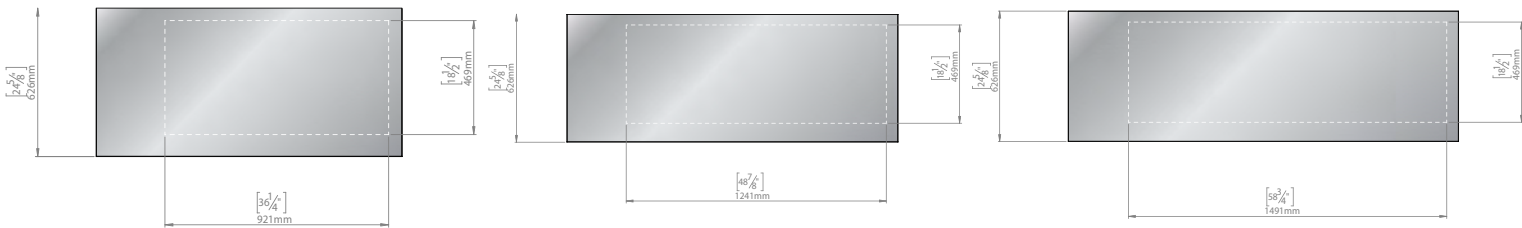
#### Warranty

3 year parts and labor warranty plus 2 additional year compressor warranty. (Continental U.S.A. & Canada only).

FBB-24-48 Top View

FBB-24-60 Top View

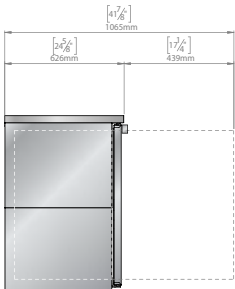
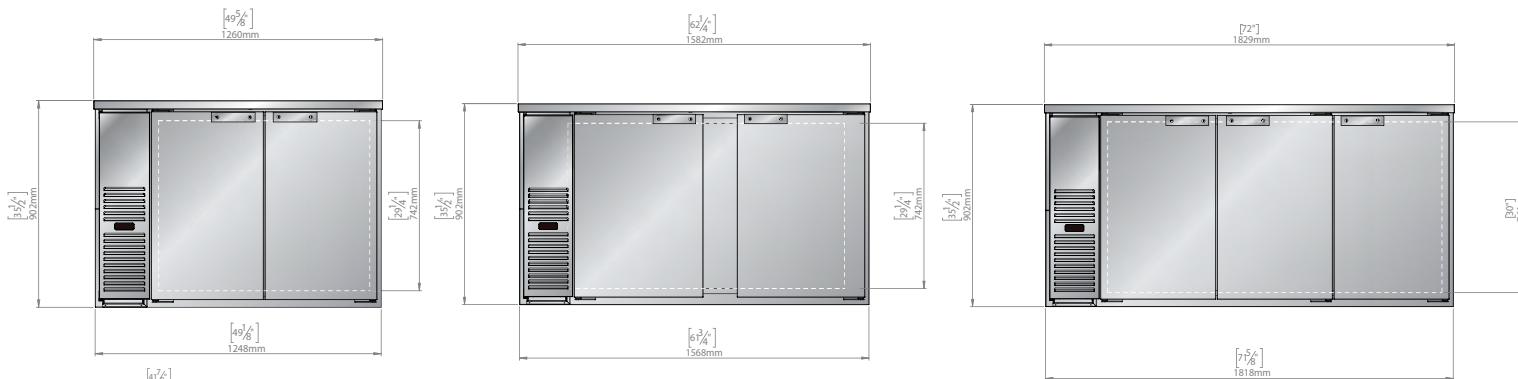
FBB-24-72 Top View



FBB-24-48 Front View

FBB-24-60 Front View

FBB-24-72 Front View



Common Side View

The manufacturer reserves the rights to modify materials and specifications without notice.

# Back Bar Refrigeration

## FBB Series **New!**

(800) 777-9129



FBB-36-N	FBB-59-N	FBB-69-N	FBB-79-N	FBB-95-N
FBB-36G-N	FBB-59G-N	FBB-69G-N	FBB-79G-N	FBB-95G-N
FBB-36S-N	FBB-59S-N	FBB-69S-N	FBB-79S-N	FBB-95S-N
FBB-36GS-N	FBB-59GS-N	FBB-69GS-N	FBB-79GS-N	FBB-95GS-N

Item # \_\_\_\_\_

### Standard Features

- Our new "Next Generation" back bar units have been completely redesigned to be **fully front breathing**, able to handle those tight bar applications and extreme **100°F environments**.
- Refrigeration system is a free flowing air system throughout the box to ensure "ICE COLD" products at all times with a side mount evaporator system.
- Heavy duty 18 gauge stainless steel top, durable **stainless steel inside walls** and coved corner floor. Reinforced bottom door frame to protect your long term investment.
- Unit comes standard with flat shelves on one door, balance with **adjustable bottle rails** for greater merchandising and inventory control.
- Greater usable capacity with the ability for 3 tall boys high and ability to take the beer the full depth of the box.
- **Field interchangeable doors** from Solid to Glass or Glass to Solid to adapt to ever changing needs.
- Units come with compressor mounted on the left side with service friendly slide out rail system.
- LED light underneath the mullion to protect itself from normal operations.



FBB-59-N



FBB-79G-N



FBB-95S-N

### Options & Accessories

- Low profile castors with reinforced rail
- Heavy duty castors with reinforced rail
- 6" Adjustable stainless steel legs
- Single / Double draft towers
- 220 volts / 50 cycles / 1 phase



\*Conforms to UL & NSF-7 standards

Back Bar	Model*	Doors	Capacity		Kegs	Shlvs	Amp	HP	Volt	NEMA Plug	Cabinet Dimensions			Shipping	
			12 Oz can	12 Oz Bottles							W	D"	H	(Wt. Cubes)	
	FBB-36(S)-N	1	430	254	2	2	6.5	1/3	115	5-15P	36-3/4"	29"	36-7/8"	275	32
	FBB-59(S)-N	2	852	486	3	4	6.5	1/3	115	5-15P	59-1/2"	29"	36-7/8"	307	51
	FBB-69(S)-N	2	1014	594	3	4	6.5	1/3	115	5-15P	69-1/2"	29"	36-7/8"	332	59
	FBB-79(S)-N	3	1092	702	4	6	6.5	1/3	115	5-15P	80"	29"	36-7/8"	396	68
	FBB-95(S)-N	3	1302	864	5	6	6.5	1/3	115	5-15P	95-1/2"	29"	36-7/8"	429	81
	FBB-36G(S)-N	1	430	254	2	2	6.5	1/3	115	5-15P	36-3/4"	29"	36-7/8"	275	32
	FBB-59G(S)-N	2	852	486	3	4	6.5	1/3	115	5-15P	59-1/2"	29"	36-7/8"	332	51
	FBB-69G(S)-N	2	1014	594	3	4	6.5	1/3	115	5-15P	69-1/2"	29"	36-7/8"	357	59
	FBB-79G(S)-N	3	1092	702	4	6	6.5	1/3	115	5-15P	80"	29"	36-7/8"	396	81
	FBB-95G(S)-N	3	1302	864	5	6	6.5	1/3	115	5-15P	95-1/2"	29"	36-7/8"	429	51

\*(S) Stainless steel units, (G) Glass door units.



## Specifications

### Construction

Heavy duty stainless steel top, 18 gauge. Black vinyl front, sides and back. (S) Models have stainless steel front and sides. Galvanized back panel. Interior constructed of heavy duty stainless steel walls with coved corner NSF approved stainless steel floor. Door is comprised of heavy duty black vinyl steel. (S) Models are stainless steel. (G) Models are a dual pane glass with black frame, (GS) Models are a dual pane glass with aluminum frame. Provided with lock per door, magnetic door gaskets, removable without tools. Door openings have a plastic breaker strips to retard condensate formation.

Unit comes complete with a 2" Ecomate CFC-Free polyurethane insulation, foamed in place.

### Refrigeration System

Self-contained capillary tube system using environmentally friendly (CFC Free) R-134a refrigerant. Front breathing compressor on left side for built-in applications. Evaporator coil is mounted to interior left side above the compressor. Large fan motor and fan blades for greater air flow.

Automatic condensate evaporator, no drain connection required. Evaporator condensate has been plumbed to a condensate pan located in the compressor housing. Access for the condensing unit behind the front grill, slides out for easy cleaning and maintenance.

Cabinets are designed to maintain temperatures between 33° F to 38° F in the interior cabinet.

### Lights

Interior LED light underneath the mullion.

### Shelving

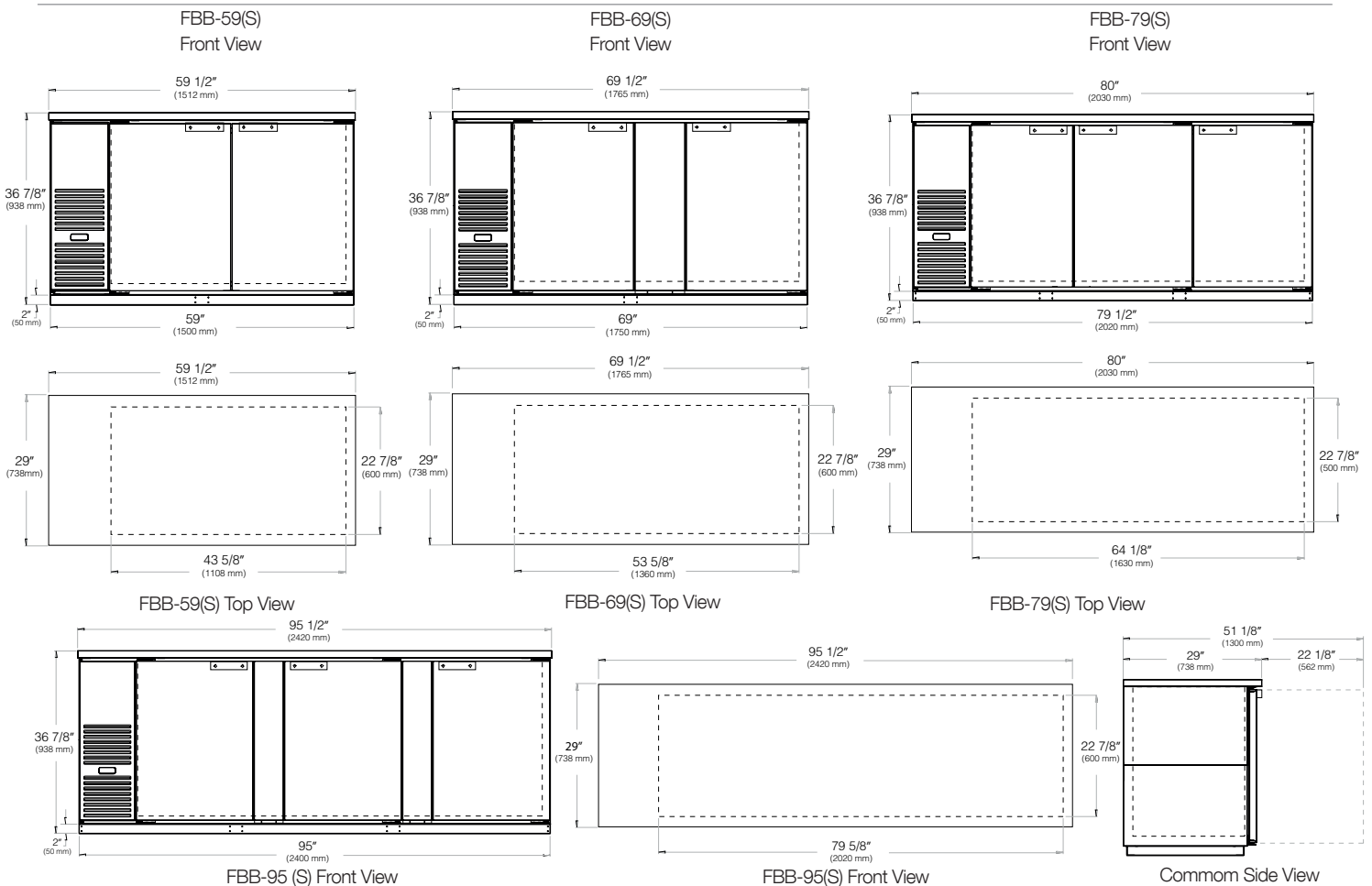
Two adjustable epoxy coated shelves provided per door standard. One door with standard flat shelves, balance will come with adjustable bottle rails.

### Others

Unit is supplied standard with an 8' cord and plug (Nema 5-15p).

### Warranty

3 year parts and labor warranty plus 2 additional year compressor warranty. (Continental U.S.A. & Canada only).



# Slim Line Back Bar Refrigeration - Sliding Door

## FBB-24 Series **New!**

(800) 777-9129



- FBB-24-48G-SD
- FBB-24-60G-SD
- FBB-24-72G-SD
- FBB-24-48GS-SD
- FBB-24-60GS-SD
- FBB-24-72GS-SD

Item # \_\_\_\_\_

### Standard Features

- Our new slim line back bar units have been designed to be fully front breathing, able to handle those tight bar applications and extreme **100°F environments**.
- Refrigeration system is a free flowing air system throughout the box to ensure "ICE COLD" products at all times with a side mount evaporator system.
- Heavy duty 18 gauge stainless steel top, durable stainless steel inside walls and covered corner floor. Reinforced bottom door frame to protect your long term investment.
- Doors are double pane, self closing and counter balance for a smooth and positive seal.
- Greater usable capacity with the ability for 3 tall boys high and ability to take the beer the full depth of the box.
- **Field interchangeable doors** from Solid to Glass or Glass to Solid to adapt to ever changing needs.
- Units come with compressor mounted on the left side with service friendly slide out rail system.
- LED light underneath the mullion to protect itself from normal operations.



FBB-24-48G-SD



FBB-24-72S-SD



### Options & Accessories

- Additional adjustable rails
- 3" Castors
- 6" Adjustable stainless steel legs
- 220 volts / 50 cycles / 1 phase



\*Conforms to UL & NSF-7 standards

Slim Line Back	Model	Doors	Capacity		Kegs	Shlvs	Amp	HP	Volt	NEMA Plug	Cabinet Dimensions			Shipping	
			12 Oz can	12 Oz Bottles							L / D / H	(Wt. / Cubes)			
	FBB-24-48G-SD	2	300	180	2	4	5.5	1/3	115	5-15P	49-5/8"	24-5/8"	35-1/2"	235	7.4
	FBB-24-60G-SD	2	390	234	3	4	5.5	1/3	115	5-15P	62-1/4"	24-5/8"	35-1/2"	290	8.4
	FBB-24-72G-SD	3	540	324	3	6	5.5	1/3	115	5-15P	72"	24-5/8"	35-1/2"	340	9.2
	FBB-24-48GS-SD	2	300	180	2	4	5.5	1/3	115	5-15P	49-5/8"	24-5/8"	35-1/2"	250	7.4
	FBB-24-60GS-SD	2	390	234	3	4	5.5	1/3	115	5-15P	62-1/4"	24-5/8"	35-1/2"	310	8.4
	FBB-24-72GS-SD	3	540	324	3	6	5.5	1/3	115	5-15P	72"	24-5/8"	35-1/2"	365	9.2

(S) Stainless steel units / (G) Glass door units.

# Slim Line Back Bar Refrigeration - Sliding Door

## FBB-24 Series

(800) 777-9129

**FAGOR**



### Specifications

#### Construction

Heavy duty stainless steel top, 18 gauge. Black vinyl front, sides and back. (S) Models have stainless steel front and sides. Galvanized back panel. Interior constructed of heavy duty stainless steel walls with coved corner NSF approved stainless steel floor. Doors are a dual pane glass with black frame. Door openings have a plastic breaker strips to retard condensate formation.

Unit comes complete with a 2" Ecomate CFC-Free polyurethane insulation, foamed in place.

#### Refrigeration System

Self-contained capillary tube system using environmentally friendly (CFC Free) R-134a refrigerant. Front breathing compressor on left side for built-in applications. Evaporator coil is mounted to interior left side above the compressor. Large fan motor and fan blades for greater air flow.

Automatic condensate evaporator, no drain connection required. Evaporator condensate has been plumbed to a condensate pan located in the compressor housing. Access for the condensing unit behind the front grill, slides out for easy cleaning and maintenance.

Cabinets are designed to maintain temperatures between 33° F to 38° F in the interior cabinet.

#### Lights

Interior LED light underneath the mullion.

#### Shelving

Two adjustable epoxy coated shelves provided per door standard. One door with standard flat shelves, balance will come with adjustable bottle rails.

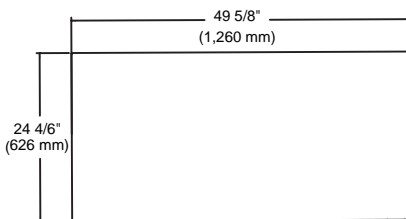
#### Others

Unit is supplied standard with an 8' cord and plug (Nema 5-15p).

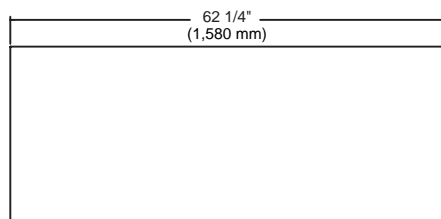
#### Warranty

3 year parts and labor warranty plus 2 additional year compressor warranty. (Continental U.S.A. & Canada only).

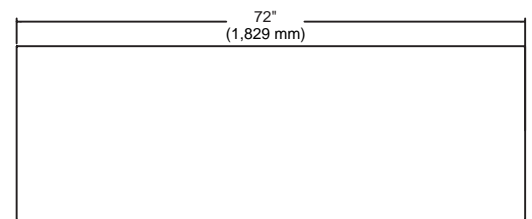
FBB-24-48 Top View



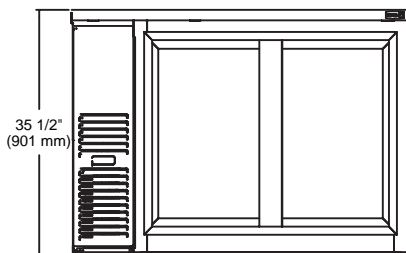
FBB-24-60 Top View



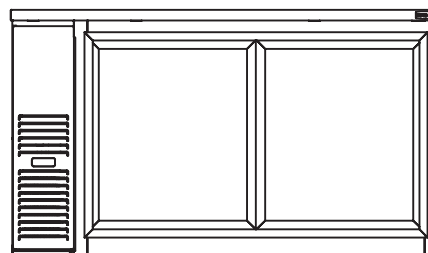
FBB-24-72 Top View



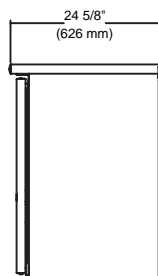
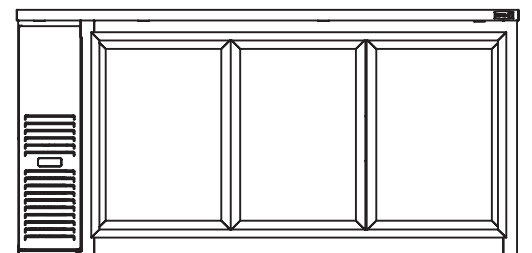
FBB-24-48 Front View



FBB-24-60 Front View



FBB-24-72 Front View



Common Side View

The manufacturer reserves the rights to modify materials and specifications without notice.



# Slide Top Bottle Coolers

## FBC Series

(800) 777-9129



FBC-50      FBC-65      FBC-79      FBC-95  
 FBC-50S    FBC-65S    FBC-79S    FBC-95S

Item # \_\_\_\_\_

### Standard Features

- Our slide top units are designed with durability and strength along with feature rich standards uncommon in the industry today.
- Refrigeration system is a free flowing air system throughout the box to ensure **"ICE COLD"** products at all times.
- Heavy duty 18 gauge stainless steel top with anodized aluminum bottle rails.
- Stylish wear resistant black vinyl on steel finish front, sides and back. (S) Models have stainless steel front and sides.
- Standard with **LED** interior lighting to provide full visibility to your bottle and **door locks** to protect your inventory.
- Heavy duty adjustable bin dividers, epoxy coated.
- Units come with compressor mounted on the right side with service friendly slide out rail system. Drain is located in the back compressor housing.
- (1) Cap catcher - Standard.



FBC-50



FBC-65



FBC-95S

### Options & Accessories

- Additional dividers
- 3" Casters
- 6" legs
- 220 volts / 50 cycles / 1 phase



\*Conforms to UL & NSF-7 standards

Bottle Cooler	Model	Lids	Dividers	Case Capacity		HP	Amps	Cord Length	Cabinet Dimensions			Shipping	
				12 Oz can	12 Oz Bottles				W	D*	H	Wt	Cubes
	FBC-50(S)	2	3	24.75	19	1/4	4.2	8'	50-1/2"	26-1/2"	33-3/8"	236	37
	FBC-65(S)	2	4	33.5	26	1/3	6.5	8'	65-1/2"	26-1/2"	33-3/8"	275	50.5
	FBC-79(S)	3	7	45	33.5	1/3	6.5	8'	80"	26-1/2"	33-3/8"	315	57
	FBC-95(S)	3	7	57	42	1/2	6.5	8'	95"	26-1/2"	33-3/8"	379	69

\*Depth does not include 1" bumper

# Slide Top Bottle Coolers

## FBC Series

(800) 777-9129

**FAGOR**



### Specifications

#### Construction

Heavy duty stainless steel top, 18 gauge. Black vinyl front, sides and back. (S) Models have stainless steel front, sides and back. Interior constructed of heavy duty galvanized steel walls with coved corner galvanized floor.

Lids are heavy duty foamed in place with stainless steel finish. Lids are provided with locks per lid. Unit comes complete with a 2" Ecomate CFC-Free polyurethane insulation, foamed in place.

#### Refrigeration System

Self-contained capillary tube system using environmentally friendly (CFC Free) R-134a

refrigerant. Front breathing compressor on right side for built-in applications. Evaporator coil is mounted to interior back panel. Large fan motor and fan blades for greater air flow. Automatic condensate evaporator, drain connection required.

Evaporator condensate has been plumbed to a condensate pan located in the compressor housing. Access for the condensing unit behind the front grill, slides out for easy cleaning and maintenance. Cabinets are designed to maintain temperatures between 28° F to 38° F in the interior cabinet.

#### Lights

Interior LED light.

#### Shelving

Adjustable epoxy coated bin dividers provided per unit

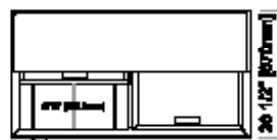
#### Others

Unit is supplied standard with an 8' cord and plug (Nema 5-15p).

#### Warranty

3 year parts and labor warranty plus 2 additional year compressor warranty. (Continental U.S.A. & Canada only).

## FBC



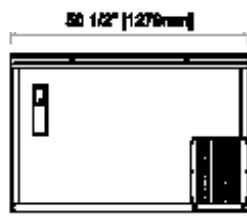
**FBC - 80**  
Top View



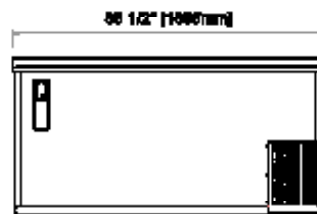
**FBC - 86**  
Top View



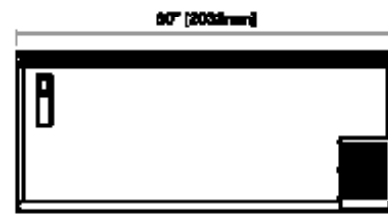
**FBC - 78**  
Top View



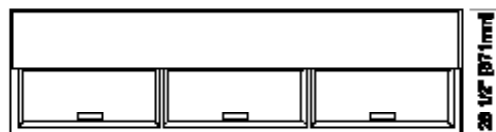
**FBC - 80**  
Front View



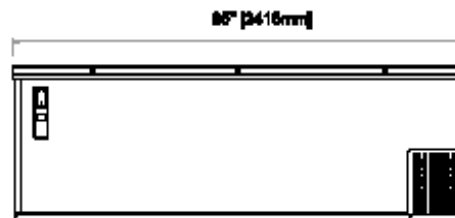
**FBC - 86**  
Front View



**FBC - 78**  
Top View



**FBC - 88**  
Top View



**FBC - 86**  
Front View



**FBC**  
Common View

The manufacturer reserves the rights to modify materials and specifications without notice.



# Glass Frosters / Chillers

## FGF Series **New!**

(800) 777-9129



FGF-24      FGF-36      FGF-50  
 FGF-24S    FGF-36S    FGF-50S

Item # \_\_\_\_\_

### Standard Features

- Our slide top units are designed with durability and strength along with feature rich standards uncommon in the industry today.
- **Exclusive 4 heavy duty shelving system** with slides in order to take full advantages of your capacity without sacrificing any space.
- Shelving slides from one side to the other on both top and middle shelves for a maximum usage.
- Digitally controlled refrigeration system for a wide range of temperatures throughout the box to ensure a frosted or chilled product at all times.
- Heavy duty 18 gauge stainless steel top with stylish wear resistant black vinyl front, sides and back. (S) Models have a stainless steel front and sides Galvanized back.
- Units come with compressor mounted on the right side with service friendly slide out rail system. Drain is located in the back compressor house.
- Shelving slides from one side to the other on both top and middle shelves for a maximum usage.



FGF-24S



FGF-36



FGF-50



\*Conforms to UL & NSF-7 standards

### Options & Accessories

- 220 volts / 50 cycles / 1 phase

Glass Frosters	Model	Doors	Capacity		Amp	HP	Voltage	NEMA Plug	Cord Length	Cabinet Dimensions			Shipping	
			8" Mugs	10 oz. Steins						W	D**	H	(Wt. Cubes)	
	FGF-24(S)	1	35	96	6.5	1/2	115	5-15P	8"	24-5/8"	27"	35-3/4"	176	13
	FGF-36(S)	1	60	162	8.0	3/4	115	5-15P	8"	36-5/8"	27"	35-3/4"	234	19.7
	FGF-50(S)	2	84	234	8.0	3/4	115	5-15P	8"	49-5/8"	27"	35-3/4"	269	27.5

(S) Stainless steel units  
 \*\* Depth does not include 1" bumper.



## Specifications

### Construction

Heavy duty stainless steel top, 18 gauge. Black vinyl front, sides and back. (S) Models have stainless steel front, sides and back. Interior constructed of heavy duty galvanized steel walls with coved corner galvanized floor.

Lids are heavy duty foamed in place with stainless steel finish. Entire cabinet is insulated with 2" foam-in-place Ecomate insulation. Polyurethane insulation with zero ozone depletion (ODP) and zero global warming (GWP).

### Refrigeration System

Self-contained capillary tube system using

environmentally friendly (CFC Free) R-404a refrigerant. Front breathing compressor on right side for built-in applications. Evaporator coil is mounted to interior back panel. Large fan motor and fan blades for greater air flow. Automatic condensate evaporator, drain connection required.

Evaporator condensate has been plumbed to a condensate pan located in the compressor housing. Access for the condensing unit behind the front grill, slides out for easy cleaning and maintenance. Cabinets are designed to maintain temperatures between 0° F to -7° F in the interior cabinet.

### Shelving

Shelving: (2) Sliding shelves with glass guards, (2) sliding shelves without guards, (2) flat floor shelves.

### Others

Unit is supplied standard with an 8' cord and plug (Nema 5-15p).

### Warranty

3 year parts and labor warranty plus 2 additional year compressor warranty. (Continental U.S.A. & Canada only).

FGF-24(S)

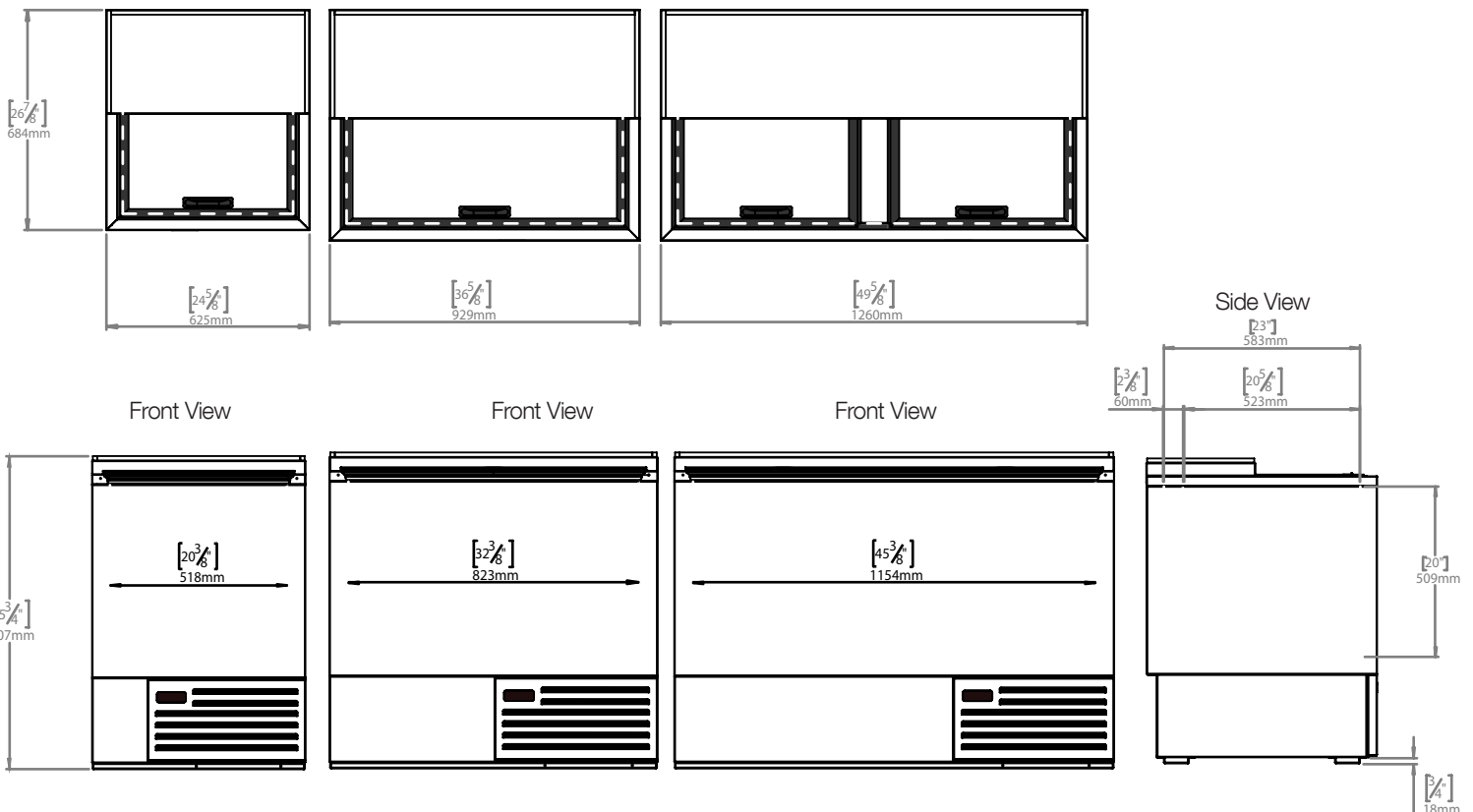
Top View

FGF-36(S)

Top View

FGF-50(S)

Top View



The manufacturer reserves the rights to modify materials and specifications without notice.